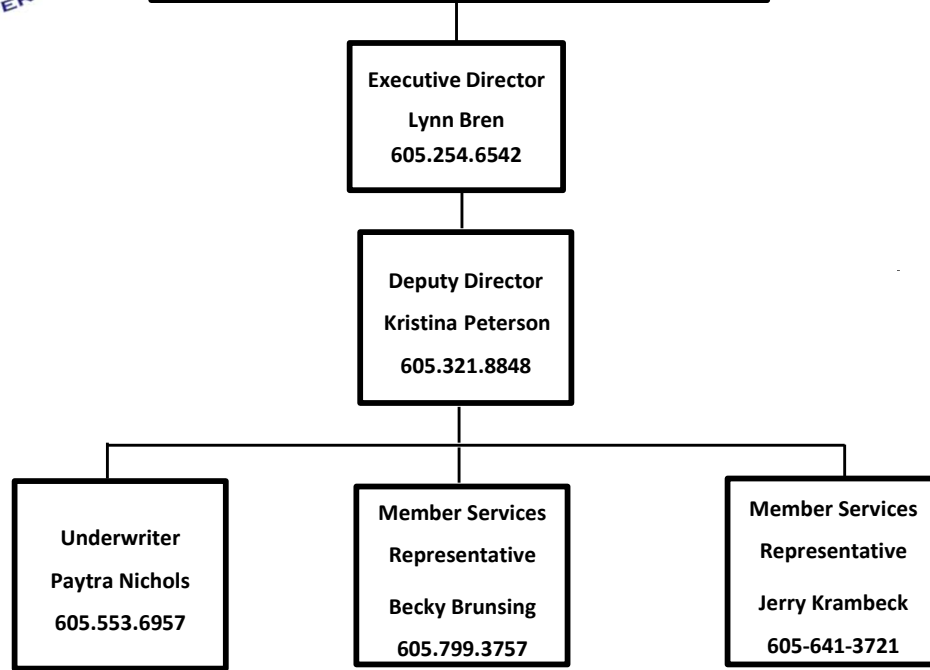




# South Dakota Public Assurance Alliance

Updated 5.15.23

## SDPAA Board of Directors



Contact SDPAA at  
800.658.3633 or 605.224.8654  
(Option2)

Website  
[www.sdpaonline.org](http://www.sdpaonline.org)

SEND PAYMENTS TO SDPAA  
MAIN OFFICE :  
SDPAA  
208 ISLAND DRIVE  
FT. PIERRE, SD 57532

SEND CORRESPONDENCE TO  
SDPAA MAIN OFFICE :  
SDPAA  
208 ISLAND DRIVE  
FT. PIERRE, SD 57532

## Service Providers

Claims Associates, Inc.  
(To File a Claim  
or for Claim  
Information)

Safety Benefits, Inc.  
(For Loss Control  
Training/Property  
Valuations)

Alliant Insurance  
Services, Inc.  
(Reinsurance)

The First National  
Bank in Sioux Falls  
(Investments)

General Counsel  
May, Adam, Gerdes  
and Thompson LLP

SDPAA Staff	Contact For
Lynn Bren <a href="mailto:lbren.sdpa@sdmunicipalleague.org">lbren.sdpa@sdmunicipalleague.org</a>	Administration / Member Services/Quotes
Kristina Peterson <a href="mailto:kpeterson.sdpa@sdmunicipalleague.org">kpeterson.sdpa@sdmunicipalleague.org</a>	Adding/Removing Coverage
Paytra Nichols <a href="mailto:pnichols.sdpa@sdmunicipalleague.org">pnichols.sdpa@sdmunicipalleague.org</a>	Adding/Removing Coverage
Becky Brunsing <a href="mailto:bbrunsing.sdpa@sdmunicipalleague.org">bbrunsing.sdpa@sdmunicipalleague.org</a>	Member Services/Quotes
Jerry Krambeck <a href="mailto:jkrambeck.sdpa@sdmunicipalleague.org">jkrambeck.sdpa@sdmunicipalleague.org</a>	Member Services/ Quotes

### Loss Control Training/Property Valuations

Contact Safety Benefits, Inc. at:  
888.313.0839 or  
605.334.9567

### Employment & Government Practices Hotlines

Call  
888.313.0839

### To File A Claim And For Claim Information

Contact Claims Associates, Inc. via email at:  
[sdpaclaims@claimsassoc.com](mailto:sdpaclaims@claimsassoc.com) or by phone at 888.613.7064 or 605.333.9810 or by fax: 605.333.9835

↓  
If an incident results in a fatality, serious bodily injury, or serious property damage, please call our contract claims administration firm, Claims Associates, Inc. immediately.  
During Normal Business Hours #: 888.613.7064

After Hours Emergency #: 888.430.2249